



Allen Village
est. 1999

6th - 8th

Principal's Chat

Allen Village School



WHOA!

We're counting down to the reopening of our buildings! It's not too late to request your child to return for in person learning!

Today's Topics of Discussion

01 Junior Academy News
— Visit from Candidate Weber
Career Jumping Event

02 Parent Teacher Conferences
— We look forward to 100%
participation.

03 Reopening in November
— What does our hybrid
setting look like in Phase
1?

04 Calendar
— What's coming up?
Student Projects

Motivation is what gets you started. **Commitment** is what keeps you going.”

—Jim Rohn

Parents' Corner

Remembering “Responsibility”



Trinity had me purchase a dry erase board monthly calendar to give her a visual of her responsibilities.

Submitted by: Yolanda Smith

01

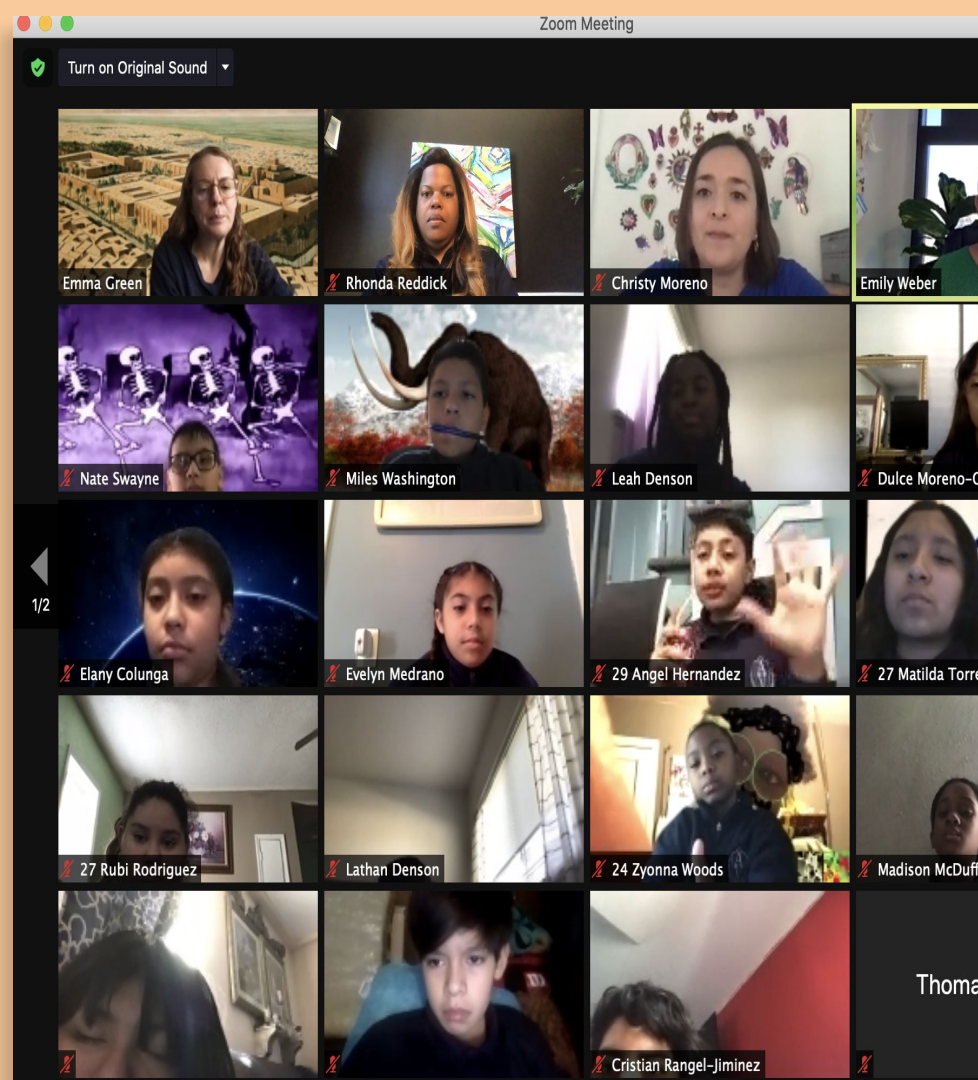
Junior Academy News

Candidate Emily Weber - District #24

Virtually visited 6th Grade on Oct. 13th -

- Civil engagement discussion
- What do you like about AV?
- Question & Answers were well crafted

6th Graders celebrated their success by having a virtual party last Friday





Nate Swayne



Miles Washington



Leah Denson



Dulce Moreno-Gonzalez



Elany Colunga



Evelyn Medrano



29 Angel Hernandez



27 Matilda Torres Salazar



27 Rubi Rodriguez



Lathan Denson



24 Zyonna Woods



Madison McDuffie



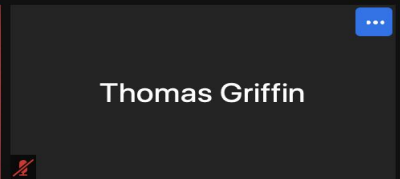
Phyllis Washington



Diego Pizano



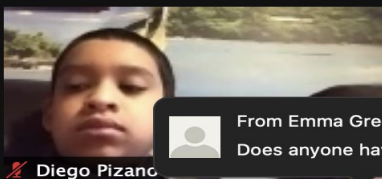
Cristian Rangel-Jiminez



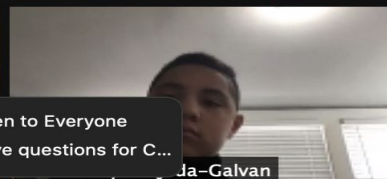
Thomas Griffin



Phyllis Washington



Diego Pizano



Ja-Galvan



Luis Barbosa Banuelos

From Emma Green to Everyone
Does anyone have questions for C...

2/2

2/2



Allen Village School
Welcomes
Candidate Emily Weber
Tuesday, October 13, 2020 9:20am

<https://zoom.us/j/73259701356?pwd=aUdBVVdXaURTa25LbmtuM2YyRXJSdz09>

District 24

PARTICIPANTS

Candidate Emily Weber, District 24
Rhonda Reddick, Principal
Emma Green, Teacher
World History Class
6th Grade Students
Christy Moreno, MCPSA

AGENDA

Introductions
-Christy Moreno-

About Allen Village Schools
-Rhonda Reddick-

"Why is it important to be civically
engaged in our community?"
-Students & Candidate Weber-

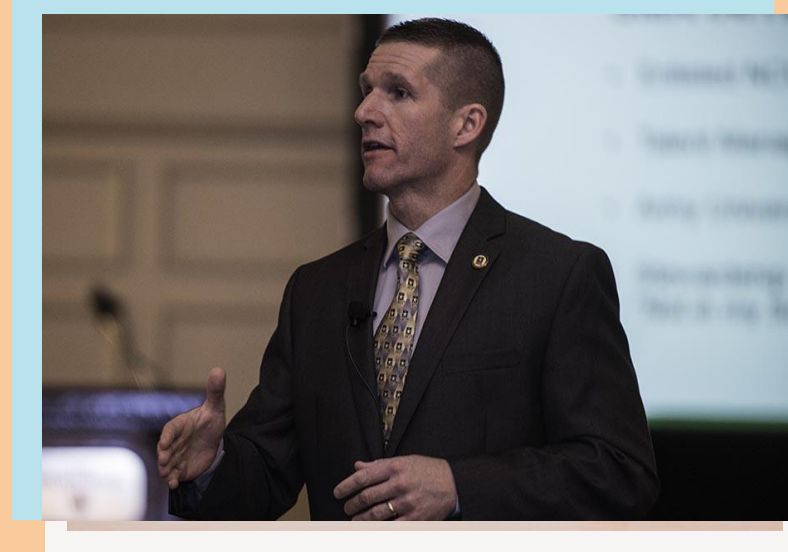
"What I love about my public charter
school!"
-Principal, Teacher & Students-

Closing and Thank You

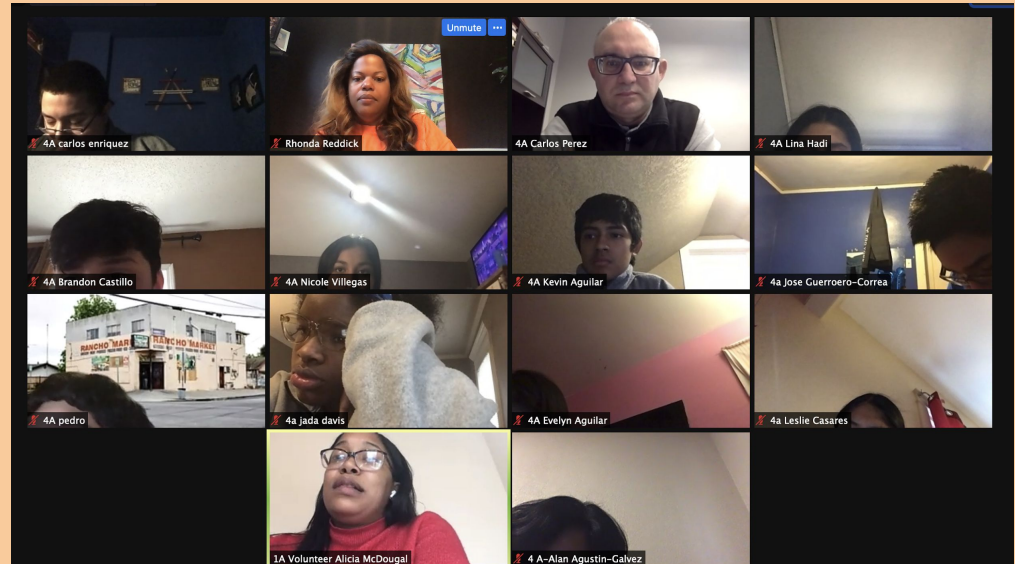
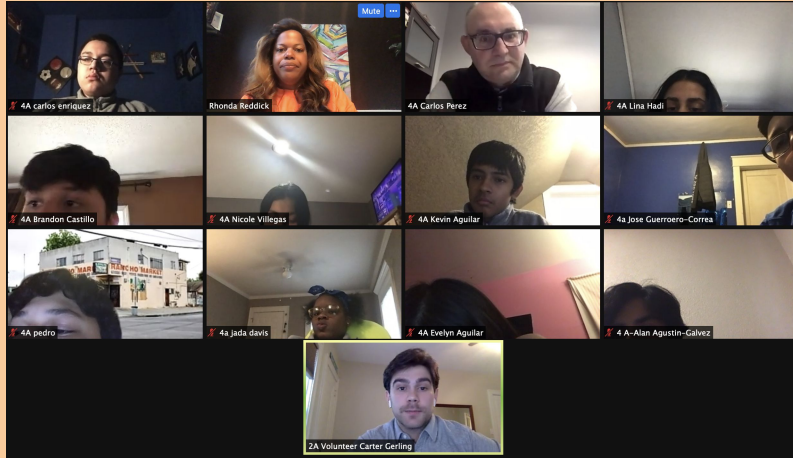


8th Grade Career Jumping Event

City of Overland Park
American Century
JE Dunn
KUMC
MW Builders
K-State Olathe
Nelson Atkins
Arvest Bank
KC Federal Reserve Bank
Arvest Bank
KC Federal Reserve Bank
T-Mobile
Independent
KC Federal Reserve Bank



Pictures from the Career Jumping Event





02

Parent Teacher
Conferences

TLCs – Attendance Requirement (Teacher Lead Conferences)



- October 29th (8:30- 3 p.m)
- October 30th (8:00 - 12 p.m)
- Teachers will be contacting you to schedule your appt. Parent requirement.
- Topics: Grades, Test scores, Attendance, Reopening Plan, Meal sign up and Bus info

03

REOPENING IN NOVEMBER

COMING SOON...

Phase 1

Possible Return Dates



November 5

K-5 returns



November 16

6th-8th returns



November 30

9th-11th returns

Personal Protective Equipment



Temperature Check Point at Front Door

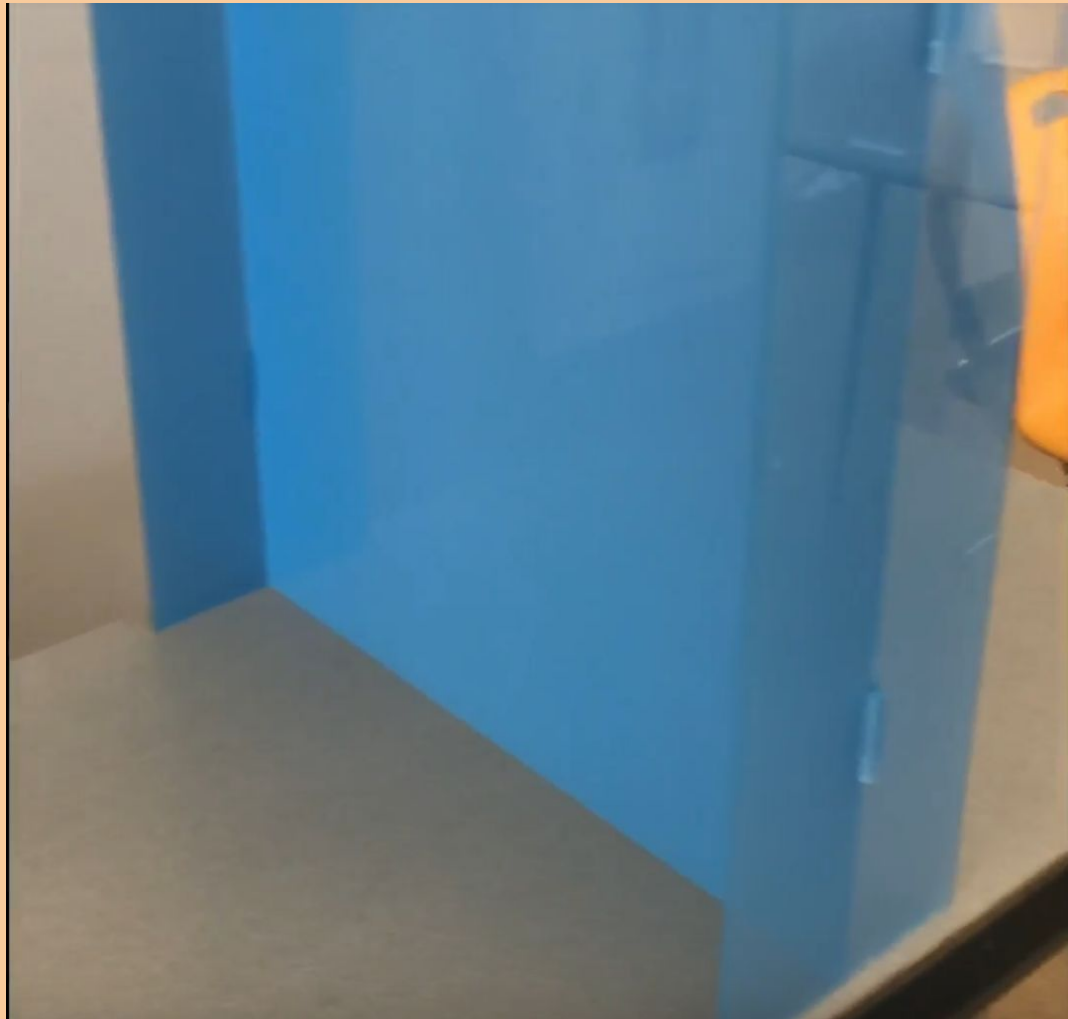
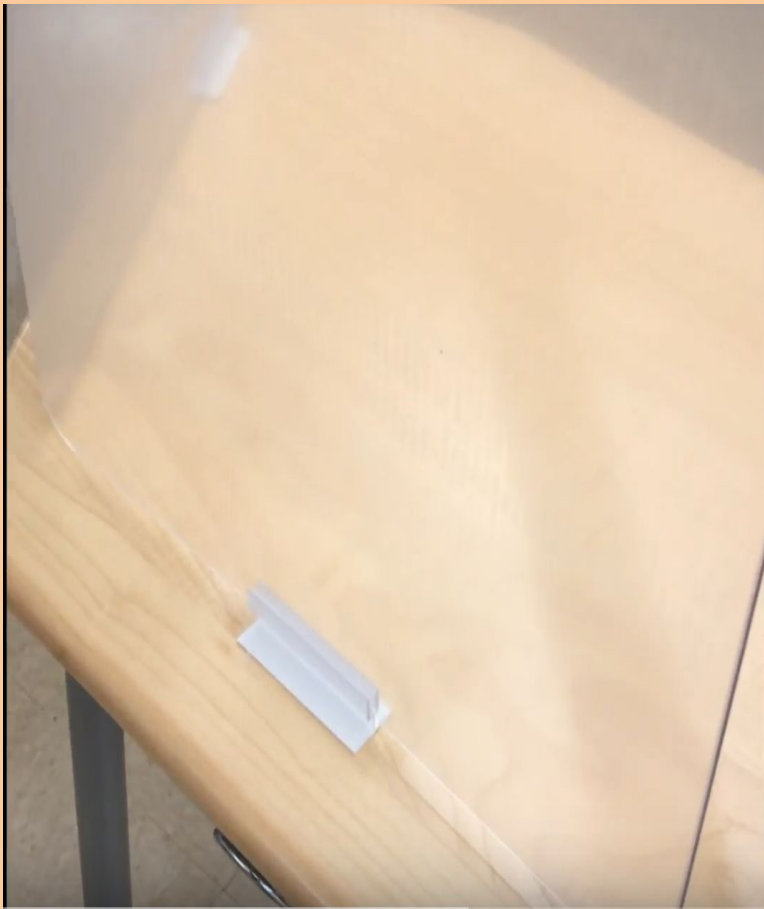
Students must wear a mask to enter building. Personal masks or school provided masks

Plexiglass Desks Guards

Each desk has personal protection and is at spaced for social distancing

Sanitizing Stations

Each classroom has sanitizer on the student's desk, cleaning wipes, humidifier with cleaning solution





Lunch Provisions During Phase 1

In person lunch distribution will take place in the classroom. Covered trays. No lunch lines.

Students will begin picking up lunch on Mondays, starting Nov. 2nd.



Breakfast and lunch will be provided for all students in person for Wednesdays. The meal will go home with students on Tuesday afternoon.

Sign up for weekly meals will continue w/ classroom teachers

Bus Transportation

Fewer students on the bus during Phase 1 provides room for social distancing. Masks will be worn at all times (bus & school)

Parent portal can be used for bus transportation info (bus route, stop and time)

- Will be posted by Oct. 28th
- May only ride one bus (no contamination of sharing buses)
- First point of contact is Eileen Lee
- Can be shared by teachers at TLCS



CLASSES

-Students will remain in class throughout the day. Virtual students will continue to receive instruction at home

-No class rotations

-No large gatherings

-Teachers will visit students classrooms and sanitize as they come and go



04

CALENDAR & THINGS TO
KNOW



Anti-Bullying Awareness

Today is Unity Day -
National Bullying Month

Student Projects

Nov. 1-3 - Election Projects to be completed. Will count as participation & attendance. No zoom meetings.

Return Dates

Nov. 5 - K thru 5

Nov. 16 - 6th-8th

Nov. 30 - 9th -12th

Unity Day





stop Bullying

By:elijah morrison



Unity Day

Types of Headaches

Migraine



Hypertension



Stress



Bullying



Webinar
-Today at 2:00
p.m. for K-12

THANKS!

Q & A

rreddick@allenvillageschool.com

Upcoming Webinars

Oct. 28

Nov. 4

CREDITS: This presentation template was created by Slidesgo, including icons by Flaticon, and infographics & images by Freepik.